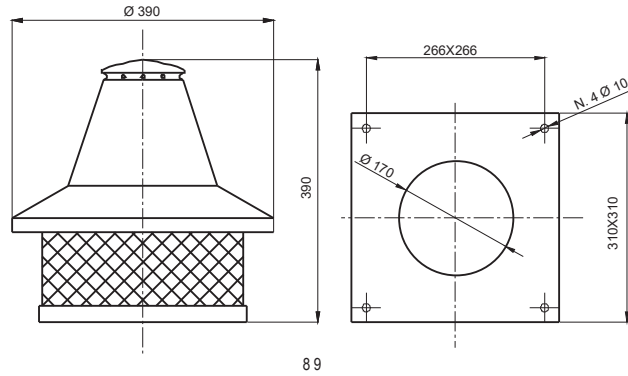
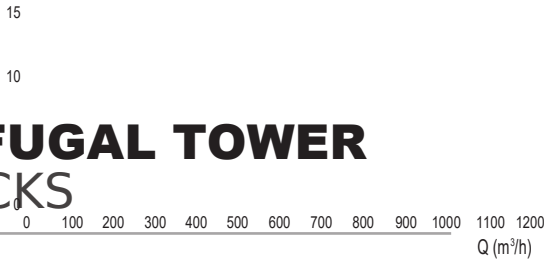


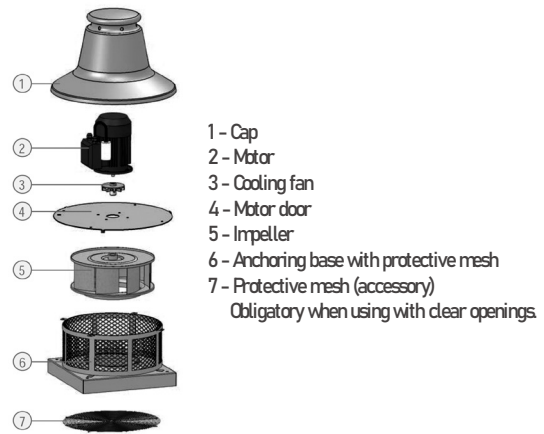
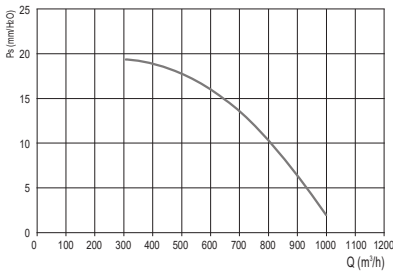
CENTRIFUGAL TOWER FOR STACKS

KAMIN



Model	m³/h	Pa	W	A	rpm	dB (A)	kg	Regulator	CODE
KAMIN	1000	200	90	0.37	1500	52	11	0411907 (page 282)	0402281

Tolerances: the air supply and noise performance levels are within the tolerances laid down by the DIN24166 Class 2 norms.



The performance levels indicated relate to an air temperature of 15°C and an altitude of 0 m above sea level, and were obtained from "C" type installations without mesh and accessories.

APPLICATIONS

The KAMIN centrifugal rooftop suction unit is ideal for starting domestic fireplaces with limited natural draught. Its special construction makes it ideal for working up to 200°C. When the fire in the fireplace is out, it can be used for ventilation to change the ambient air.

CONSTRUCTION

- High performance, backward curved blade impeller in galvanised plating. Balanced in accordance with UNI – ISO 1940.
- Anchoring base, with suction opening and steel plating protective mesh, protected against the weather by being painted with epoxy-polyester paint.
- Cap in painted aluminium.
- Alternating current electric motor, asynchronous three-phase or sin-

gle-phase, separated from the flow of air conveyed. IP55 protection, class H insulation, S1 service, construction conforms to IEC / EEC / UNEL MEC specifications.

- Arrangement 5; directly coupled to the projecting impeller.

TECHNICAL SPECIFICATIONS

- Air conveyed: max 200°C.
- Power supply: single-phase (M) 230V-50 Hz

ACCESSORIES

- Speed regulator: SRE-M 1,5 A

Please Note: while the fireplace is in use, the fan must be on at all times.