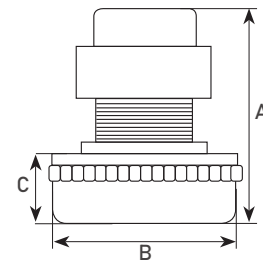


MOTORS FOR WET / DRY VACUUM CLEANERS

Tangential, single-phase 220/240 - 50/60Hz



TWO-STAGE

LAMB - MODEL 116355-00



POWER NOM. W	POWER MAX. W	VACUUM H2O mm	FLOW RATE l/s	AIRWATT	Ø B	BOX SUCTION C	CODE
1200	1300	2400	56	370	146	57	3303035

LAMB - MODEL 117157-00



POWER NOM. W	POWER MAX. W	VACUUM H2O mm	FLOW RATE l/s	AIRWATT	HEIGHT TOT. A	Ø B	BOX SUCTION C	CODE
1300	1400	3100	50	436	195	182	40	3303022

SPARES: A - C1



POWER NOM. W	POWER MAX. W	VACUUM H2O mm	FLOW RATE l/s	AIRWATT	HEIGHT TOT. A	Ø B	BOX SUCTION C	CODE
1000	1150	2300	46	315	172	144	69	3303016F

24 volt motor

SPARES: C1



POWER NOM. W	VACUUM H2O mm	AIRWATT	HEIGHT TOT. A	Ø B	BOX SUCTION C	CODE
450	1400	110	176	144	69	3303016-24

36 volt motor

SPARES: C1



POWER NOM. W	VACUUM H2O mm	AIRWATT	HEIGHT TOT. A	Ø B	BOX SUCTION C	CODE
600	1400	150	176	144	69	3303016-36



SPARES on page 305