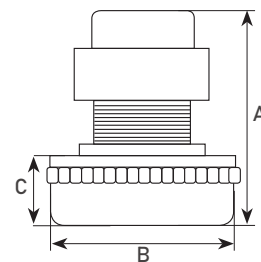


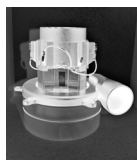
MOTORS FOR WET / DRY VACUUM CLEANERS

Tangential, single-phase 220/240 - 50/60Hz



► TWO-STAGE

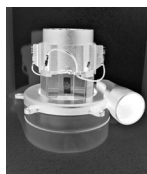
SPARES: C1



POWER NOM. W	POWER MAX. W	VACUUM H2O mm	FLOW RATE l/s	AIRWATT	HEIGHT TOT. A	Ø B	BOX SUCTION C	CODE
1000	1150	2300	46	315	176	144	76.5	3303016

AMETEK - MODEL 069102005 - new code. 61109.60173 (24 volt motor)

SPARES: C1



POWER NOM. W	HEIGHT TOT. A	Ø B	BOX SUCTION C	CODE
500	176	144	76.5	330301624

AMETEK - MODEL 069403003

SPARES: B - C1



POWER NOM. W	HEIGHT TOT. A	Ø B	BOX SUCTION C	CODE
1000	199	144	72	3303020

LAMB - MODEL 121114-13



POWER NOM. W	VACUUM H2O mm	FLOW RATE l/s	AIRWATT	HEIGHT TOT. A	Ø B	BOX SUCTION C	CODE
1300	3000	52	463	206	182	58	3303033

LAMB - MODEL 117201-00



POWER NOM. W	VACUUM H2O mm	FLOW RATE l/s	AIRWATT	HEIGHT TOT. A	Ø B	BOX SUCTION C	CODE
1300	3000	50	455	195	182	64	3303034

SPARES on page 305