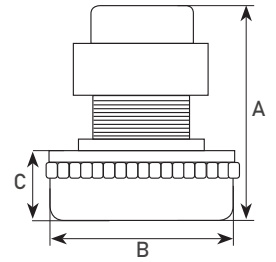


MOTORS FOR WET / DRY VACUUM CLEANERS

Tangential, single-phase 220/240 - 50/60Hz



THREE-STAGE

SPARES: **A - C1**



POWER NOM. W	HEIGHT TOT. A	Ø B	BOX SUCTION C	CODE
1100	202	144	94	3303021F

24 volt motor

SPARES: **C1**



POWER NOM. W	HEIGHT TOT. A	Ø B	BOX SUCTION C	CODE
450	200	144	94	3303021-24

36 volt motor

SPARES: **C1**



POWER NOM. W	HEIGHT TOT. A	Ø B	BOX SUCTION C	CODE
600	200	144	94	3303021-36

SPARES: **B - C1**



POWER NOM. W	HEIGHT TOT. A	Ø B	BOX SUCTION C	CODE
1300	199	144	94	3303021

AMETEK - MODEL 069100005 - new code. 61109.60158 (24 volt motor)

SPARES: **C1**



POWER NOM. W	HEIGHT TOT. A	Ø B	BOX SUCTION C	CODE
500	198	144	94	330302124



SPARES on page 305