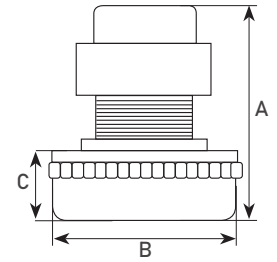


MOTORS FOR WET / DRY VACUUM CLEANERS

Tangential, single-phase 220/240 - 50/60Hz



► THREE-STAGE

AMETEK - MODEL 069100003 - new code. 61109.60157 (36 volt motor)

SPARES: C1



POWER NOM. W	HEIGHT TOT. A	Ø B	BOX SUCTION C	CODE
600	198	144	94	330302136

AMETEK - MODEL 6426SA

SPARES: C1



POWER NOM. W	HEIGHT TOT. A	Ø B	BOX SUCTION C	CODE
1400	208	144	101	3303037

LAMB - MODEL 117123-00



POWER NOM. W	POWER MAX. W	VACUUM H2O mm	FLOW RATE l/s	AIRWATT	HEIGHT TOT. A	Ø B	BOX SUCTION C	CODE
1150	1400	3500	45	448	204	146	75	3303038

LAMB - MODEL 117502-12/13



POWER NOM. W	POWER MAX. W	VACUUM H2O mm	FLOW RATE l/s	AIRWATT	HEIGHT TOT. A	Ø B	BOX SUCTION C	CODE
1400	1600	3700	48	521	224	182	68	3303039

SPARES on page 305