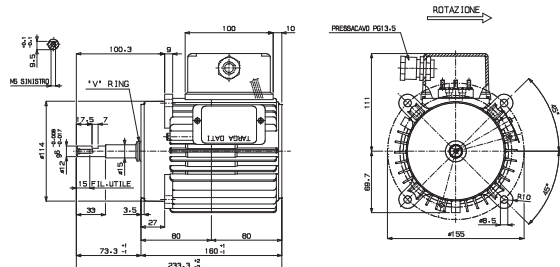
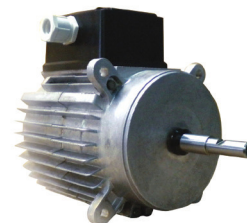
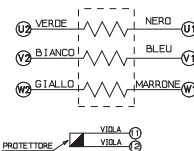


# MOTORS FOR AIR HEATERS - EXTRACTORS

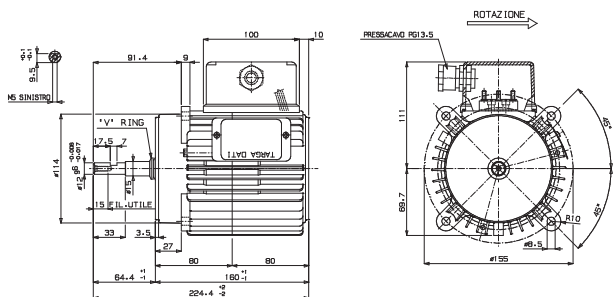
D0045



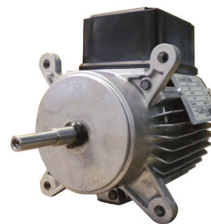
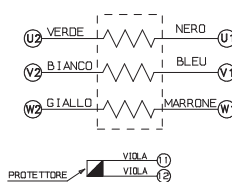
SCHEMA CONNESSIONI  $\Delta$  Y



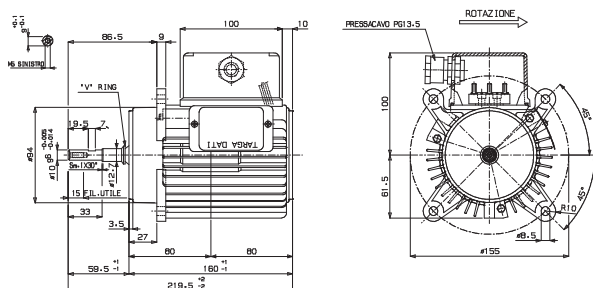
D0046



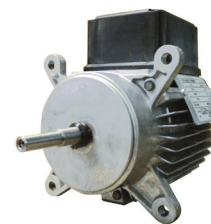
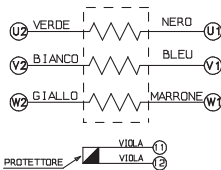
SCHEMA CONNESSIONI  $\Delta$  Y



C0340



SCHEMA CONNESSIONI  $\Delta$  Y



MODEL	V	W	A	POLES	SPEED	rpm	CODE
D0045	400V	400	0,75	4/6	2	1350/1000	0402335
D0046	400V	700	1,45	4/6	2	1350/1000	0402336
C0340	400V	280	0,6	4/6	2	1350/1000	0402333

**DESCRIPTION AND APPLICATIONS:**

The spare motors offered are mainly installed with blowing axial fans in Air Heaters. These air heaters are mainly installed in industrial

buildings, parking garages, gyms, and any setting with a large volume, which require fans with a high head.

MECHANICAL SEALS

PUMPS

FANS

MOTORS

INSULATION

EQUIPMENT

MOTOR SPARES

TOOL SPARES

SWITCHES